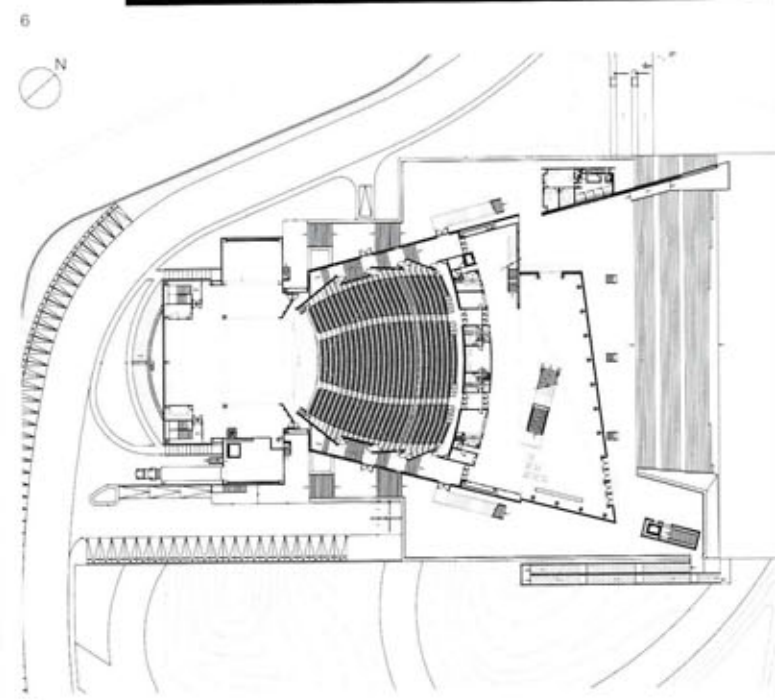
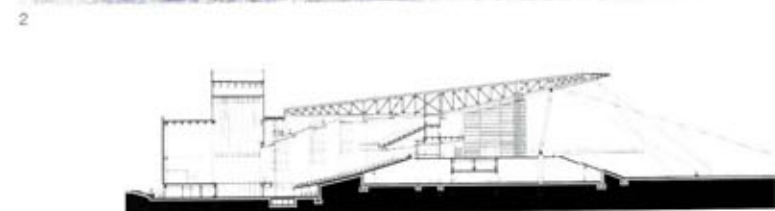
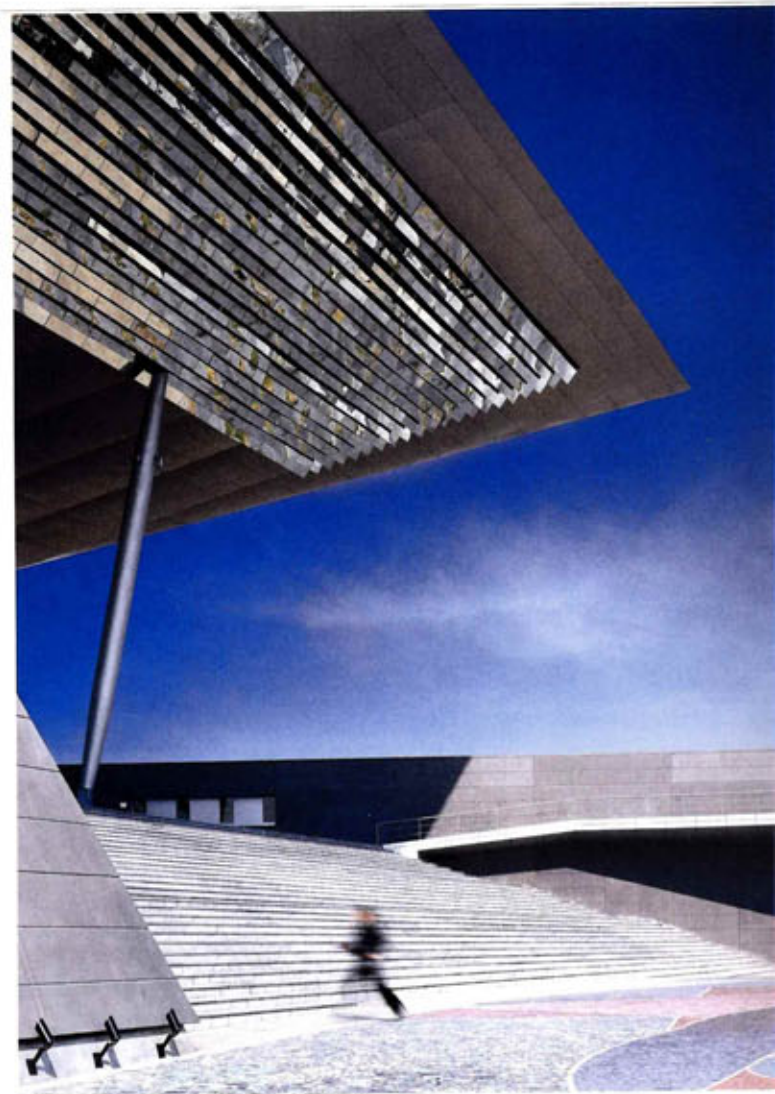
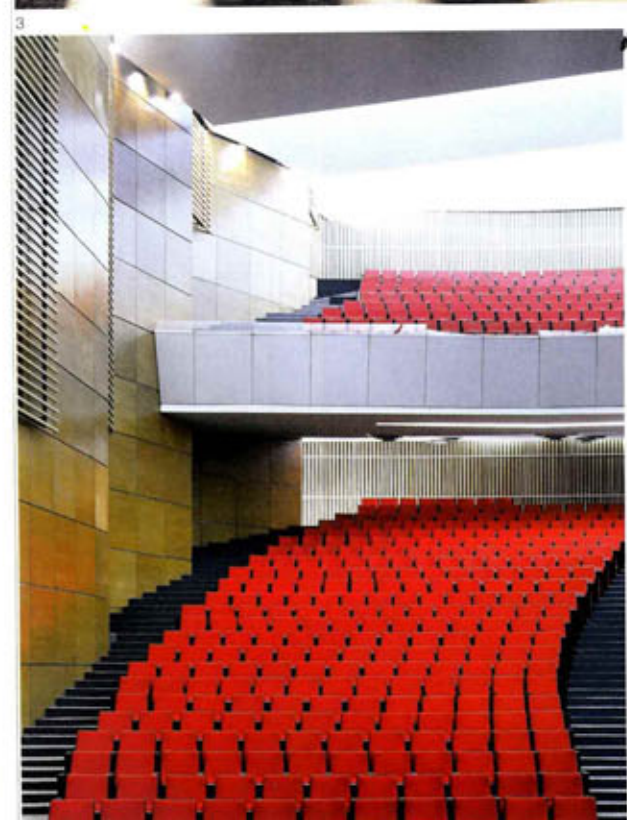
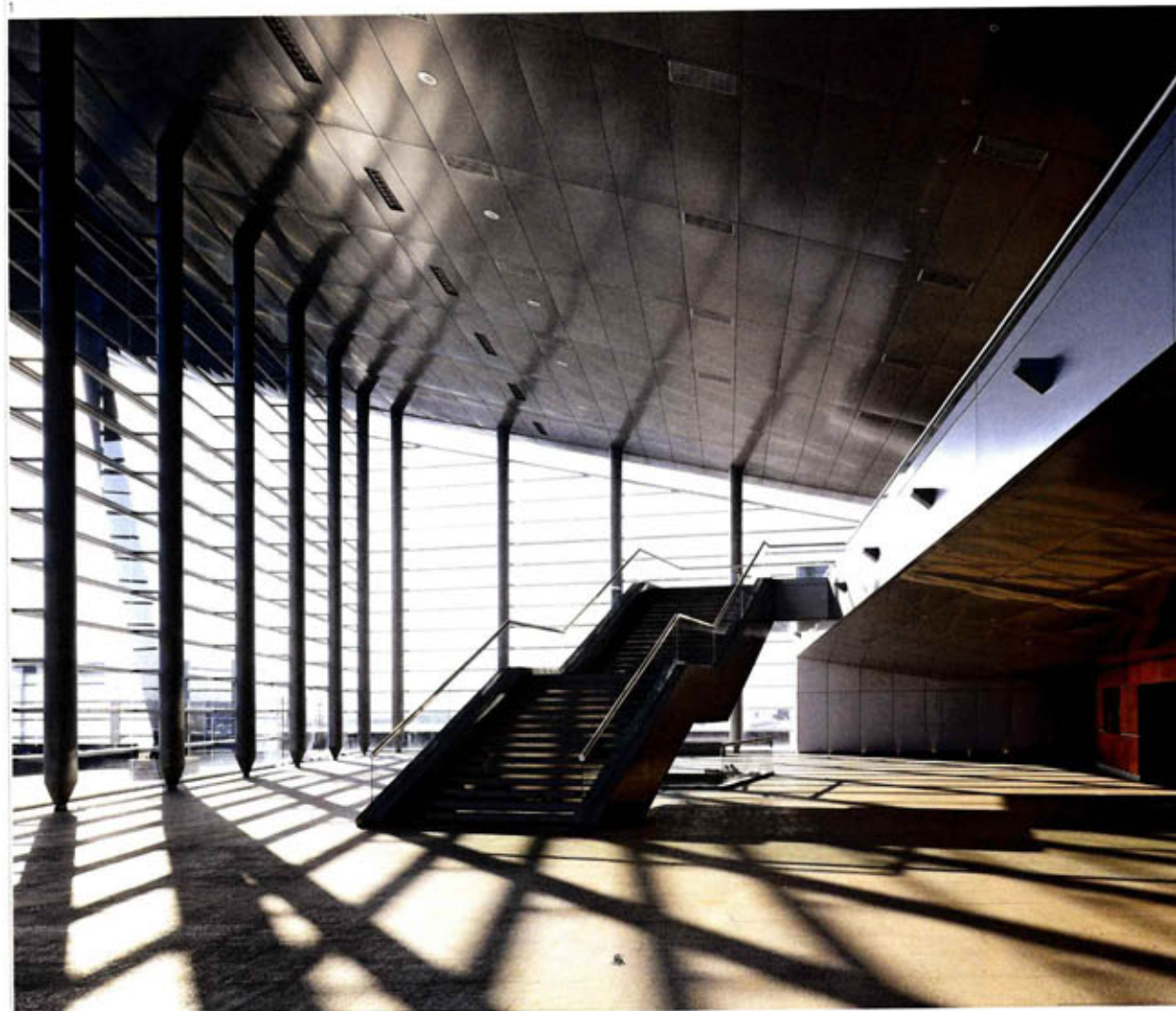


THE  
PHATIDON  
ATLAS  
OF 21<sup>ST</sup>  
CENTURY  
WORLD  
ARCHITECTURE

1,037	Buildings	244	Single Houses	18
		63	Schools	8
653	Architects	11	Art Galleries	28
		76	Museums	6
6	Geographical Regions	7	Swimming Pools	
		2	Town Halls	
		57	Office Buildings	
89	Countries	38	Universities	
		8	International Airports	





**0943** Gota de Plata Auditorium is situated in the David Ben Gurión Park, part of a new urban development called the Silver Zone at the edge of the city of Pachuca in central Mexico. The auditorium is one of a group of public and cultural buildings in the park, but its position and scale make it the most significant. The building is adjacent to a large square paved in a vividly coloured mosaic designed by a local artist and situated at the end of the park's main esplanade.

A cantilevered steel roof structure physically connects the auditorium with the slanting glazed principal facade of the building and reaches out over the podium and steps in front. The underside of this roof is partly covered in mirrors, which reflect the colours of the mosaic. A wide stair leads up from the square to the podium and into the light-filled foyer. The roof's structure is supported by lateral walls of reinforced concrete which clearly define a sequence of internal spaces that increase in width and height. Visitors move through these spaces in a smooth transition from the open foyer and its views of the park to the enclosed performance space. The 2,000-seat auditorium is framed by the roof and the lateral walls. This space contrasts with the transparent, reflective, white and silver palette of the building's

exterior and foyer areas, with walls lined in timber and red seats.

- 1 Exterior view of main entrance
- 2 Underside of roof covered with mirrors
- 3 Interior view of foyer
- 4 View of auditorium from stage
- 5 View of auditorium seating
- 6 Section through building
- 7 Ground-floor plan

**Client**  
Pachuca State Government  
**Area**  
14,000 m<sup>2</sup>/150,695 sq ft  
**Cost**  
US\$21,048,000  
**Coordinates**  
20.1006 -98.7705