

You are here: [Home](#) » [Architecture](#) » [Plaza Residences | Migdal Arquitectos](#)

Plaza Residences | Migdal Arquitectos

David K. | March 2, 2011

37



5



103



0



Mexico city-based architectural firm **Migdal Arquitectos** has completed the **Plaza Residences**.



The **shape** of the building gives **richness and movement** to the urban context. **Plaza Residences** becomes a **sculpturesque** object that acts as a showcase that defines the Monument to Columbus on one of the most sightly corners of **Avenida Reforma**.

Migdal Arquitectos

DESIGN EVENT NEWS
submission information here

FRITZ furniture • art • lighting
HOLLANDER



SHOP NOW



CUBIC

MODULAR DISPLAYS

+ STAY CONNECTED

+MOOD delivers the design topics right to your inbox. Subscribe today!

Enter your email address to join our Newsletter.



Like 10k

+ FEATURED SITES

- + Bathrooms News
- + Reception Desks
- + Business cards
- + furniture shipping Phoenix
- + 8mm film conversion

Comments

Popular

Recent

Archives

+ Bonnie Culler: Those are wonderful cases for lenses and it has very nice colors too! Nice innovations for lens hold

+ Kristen Watters: Looks very chic! :) I like it! This is



Plaza Residences, image © Migdal Arquitectos

+ Project description by **Migdal Arquitectos**

a wonderful case for lenses.

+ Affordable Timber panels: 3d wall panels offer a dramatic alternative to flat wall panels. Combine 3d wall panels with creativ

+ Benji: Brilliant, both literally and figuratively!

+ Victor: Nice. It's should be per capita. In the US there are 330M ppl while in turkey there are around 70M.

Due to the redesign and recovery of the Historic Center of Mexico City, Paseo de la Reforma, one of the most important avenues of the city, reemerges as the most beautiful commercial, cultural and historic avenue of the metropolis. In recent years, distinct real estate property developments of exceptional importance and magnitude have been developed on this avenue. One of these new developments is the Plaza Residences building; an emblematic building.

The building is flanked by two cultural landmarks that enroot it with the historic past of the area, the Monument to Columbus and the Monument to the Revolution. The shape of the building gives richness and movement to the urban context. Plaza Residences becomes a sculptural object that acts as a showcase that defines the Monument to Columbus on one of the most sightly corners of Avenida Reforma.



+ LINKS



+ DESIGN FIELDS



Plaza Residences, image © Migdal Arquitectos

In response to the Columbus traffic circle, the building, with its glass interior façade, is erected in the shape of a boomerang, creating a concave interior space that we give to the city by way of Reforma. This concave shape opens up and embraces the majestic traffic circle, integrating it into its concept. The boomerang shape draws out from a long linear element which constricts into the plot with the intention of presenting a considerable unfoldment of façade towards Reforma, making it possible to favor all the apartments with views towards the majestic avenue.

The existing urban belt continues thanks to the basement of the building, which is presented as a continuous element with a collection of perforations. This stone pedestal gives presence to the first floors that accommodate common areas, commercial areas and services.

Spain Modern
 Chair Australia
 New Zealand
 Events/News
 White ESD design
 Concrete Lattice
 screen Creative design
 Fluid form
 Waterfront
 architecture
 Landscape
 architecture
 USA architecture
 Random
 pattern European
 architecture Swimming
 pool Italy Glass
 Netherlands Timber
 Courtyard
 architecture Cladding
 Refurbishment /
 Extension USA Stair
 Color architecture Iconic
 architecture
 Contemporary design
 Competition Korea



- + Luxury Magazine
- + Tevami
- + House Design Interior

The building is an abstract entity giving a sense of scalelessness; its principal façade present itself as a smooth-skinned glass curtain, permitting, at a glance, the loss of perception of the building's floors. The building's skin is accentuated with randomly placed aluminum mullions, which control the effect of the sun, while creating an interesting effect of light and shadow in the concave shape.

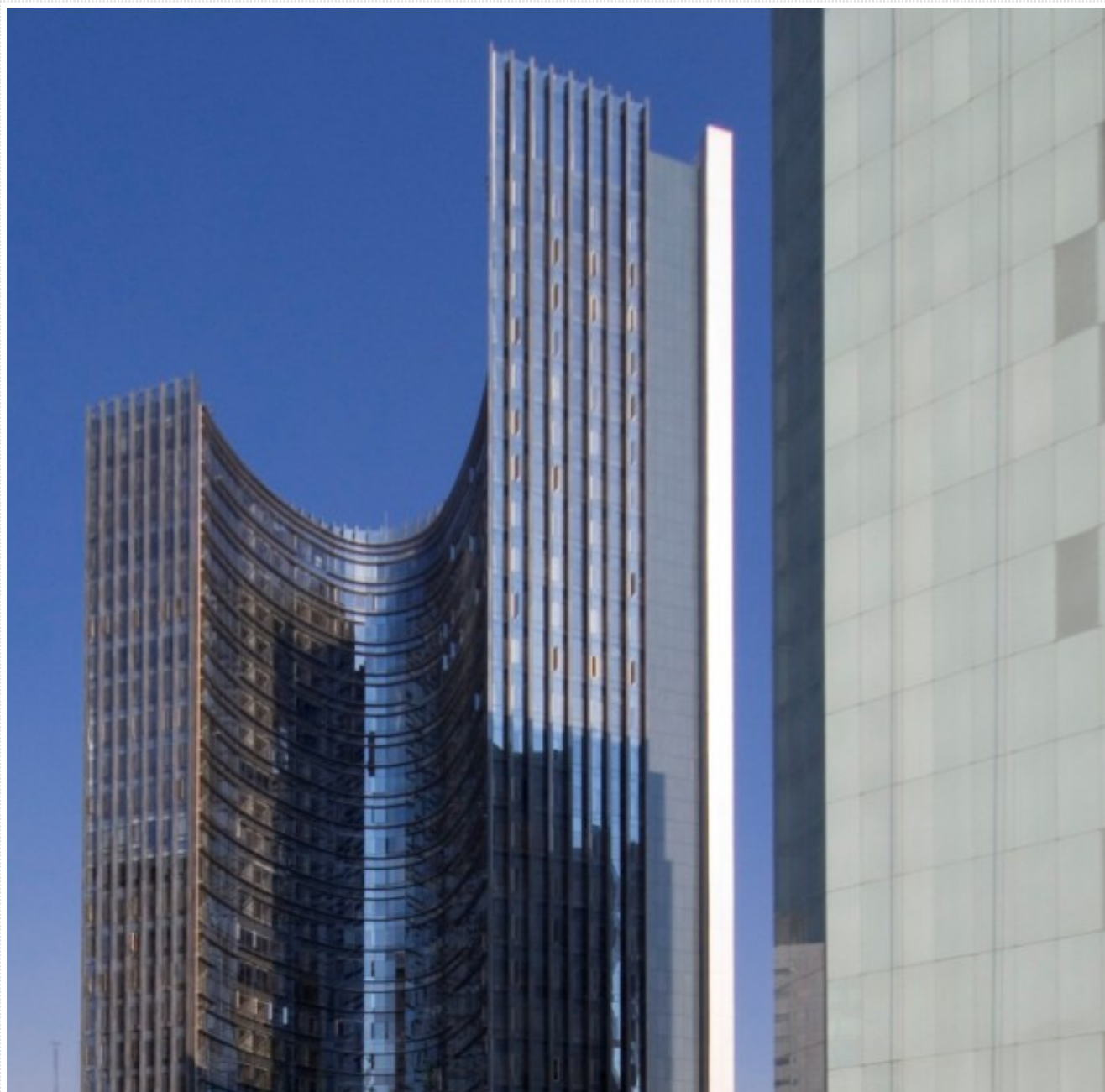
The apartment tower is divided into two zones, both with independent access and lobbies. Each apartment is designed based on the position occupied thereby in the tower according to its orientation. The building has apartments and suites of between 60 and 170 square meters, 4 basement parking lots, common areas for the apartments and a commercial ground floor.



Plaza Residences, image © Migdal Arquitectos

Art is integrated into the Plaza Residences project by means of a raised mural plaza or "piscal", which, apart from being a common plaza, also serves as a transition towards the exterior, further favoring visual contact towards the great avenue. The apartments, of single or double height.

Due to its circular shape and horizontal bands of its convex façade, the building becomes an abstract crown in contrast to the Cantera stone of the monument to the Revolution. The passage ways to access the suites that run the entire length of the building become viewpoints providing a unique view of Mexico City.





Plaza Residences, image © Migdal Arquitectos

The corners of the building emphasize its height with an abstract language by means of vertical elements which break the horizontality of the aluminum mullions. One of the vertical elements shifts position to move and converts itself with a group of columns and glass in a "box of light", giving presence to the building.

The building accommodates a business center, fitness center, projection room, swimming pool with a bird's-eye view of Reforma; a kid's club, lounge, events hall, parking lot, common open-air plaza and technology.

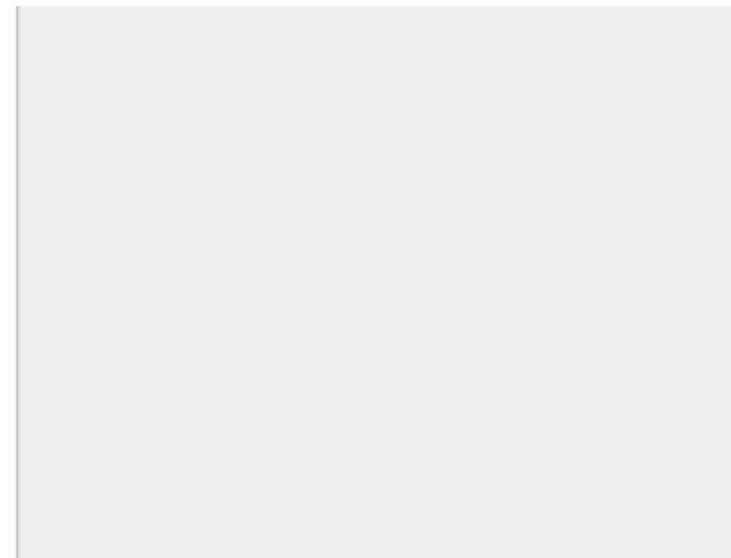
The constructive system of Plaza Residences is complex and specialized. We used a high volume of concrete and steel in a remarkable system, from the soil mechanics system to the constructive system. The volume of concrete used was 51,707.50 m²

We used a complex and specialized engineering as the pressure retaining system and as a resistant system against Mexico City earthquakes. We used metal box piles at 54 meters, such as an hybrid system of box pile and "milan walls" to give support to the basement.

Above the basement is a 20-floor apartment tower. The structure is of reinforced (structural steel) concrete columns. The reinforced concrete was subsequently poured in order to form the main

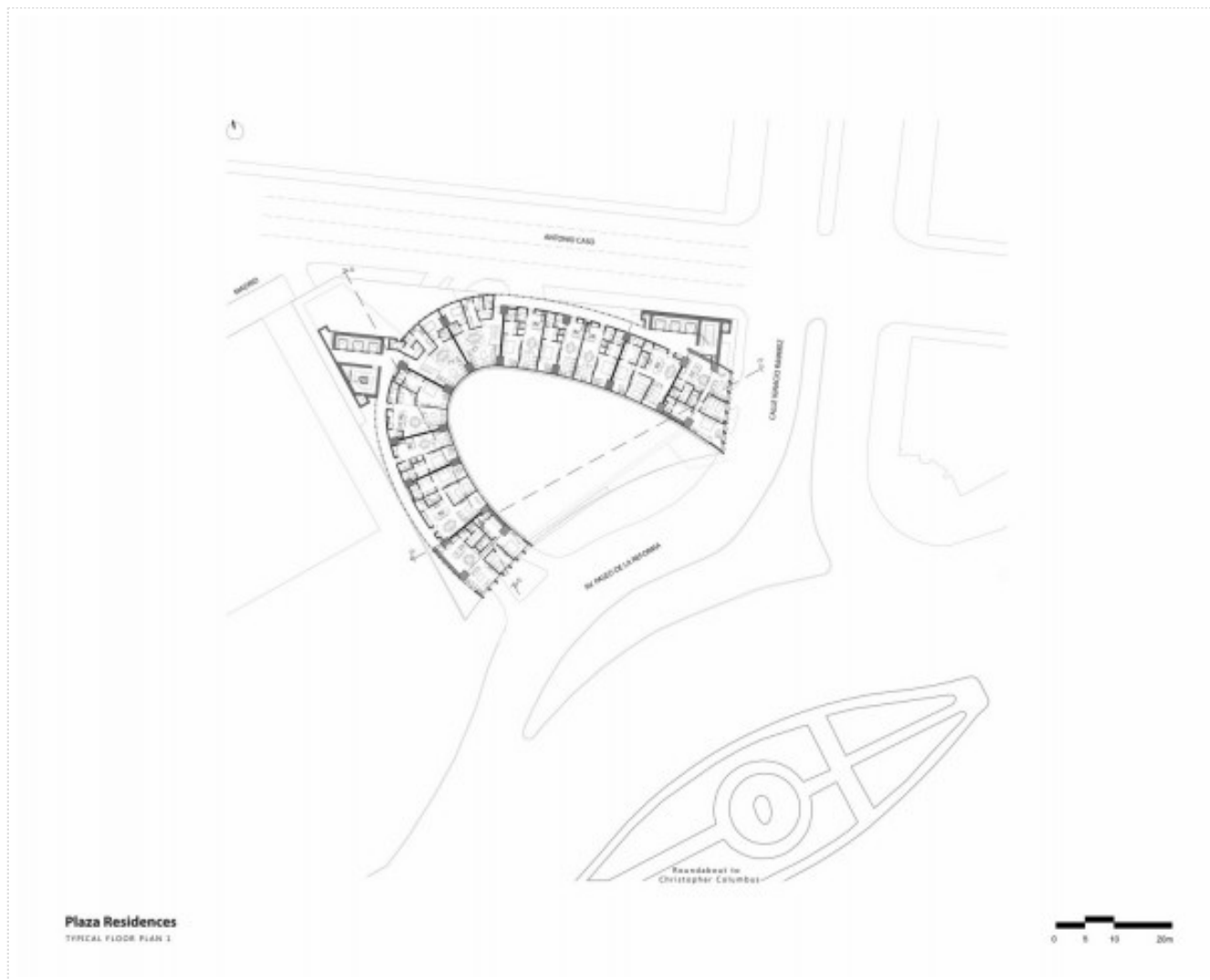
structure.

Plaza Residences is a Sustainable Building which has a façade with aluminum mullions which control the effect of the sun. Also has water tank, a reserve for firefighting, hydrants, pressurized fire escapes and controlled accesses with quick-release fire doors. Common Pump Room for drinking water tank and rainwater tank. Ten water tanks in the Roof area. Anaerobic Treatment Plant. A 1,281-Kw electrical substation, emergency plant, energy saving systems with sensor and timer-controlled electric lights in the parking lot basements, the passageways of the apartment tower and common areas. Five gas tanks, a carbon monoxide detection system in the parking lots, an air ventilation and air injection system in the parking lot basements, ventilation in the common area kitchen, ventilation in the swimming pool area, and ventilation in the kitchens, restrooms and utility rooms of the apartments. Evaporative air coolers are installed for servicing the common areas. Six elevators, and fr eight elevators in Basements E-1 and E-2.





Plaza Residences - Amenities Floor Plan, drawing © Migdal Arquitectos



Plaza Residences - Typical Floor Plan, drawing © Migdal Arquitectos

+ Project credits / data

Project: Plaza Residences

Location: Paseo de la Reforma 77, Ciudad de México

Project: 2006-2010

Construction: 2007-2010

Construction Area: 42,200 m2

Typology: Residential – Skyscrapers

Project and Architectonic Direction: Jaime Varon, Abraham Metta, Alex Metta / **Migdal Arquitectos**

Building Direction: Jaime Varon, Abraham Metta, Alex Metta

Photographers: Luis Gordo & Ian Lizaranzu

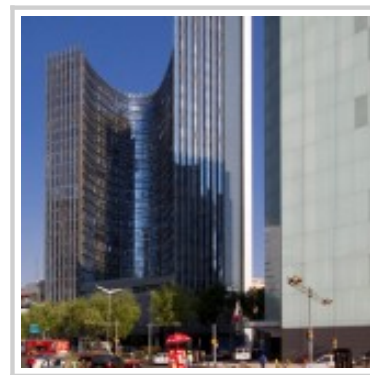
+ About **Migdal Arquitectos**

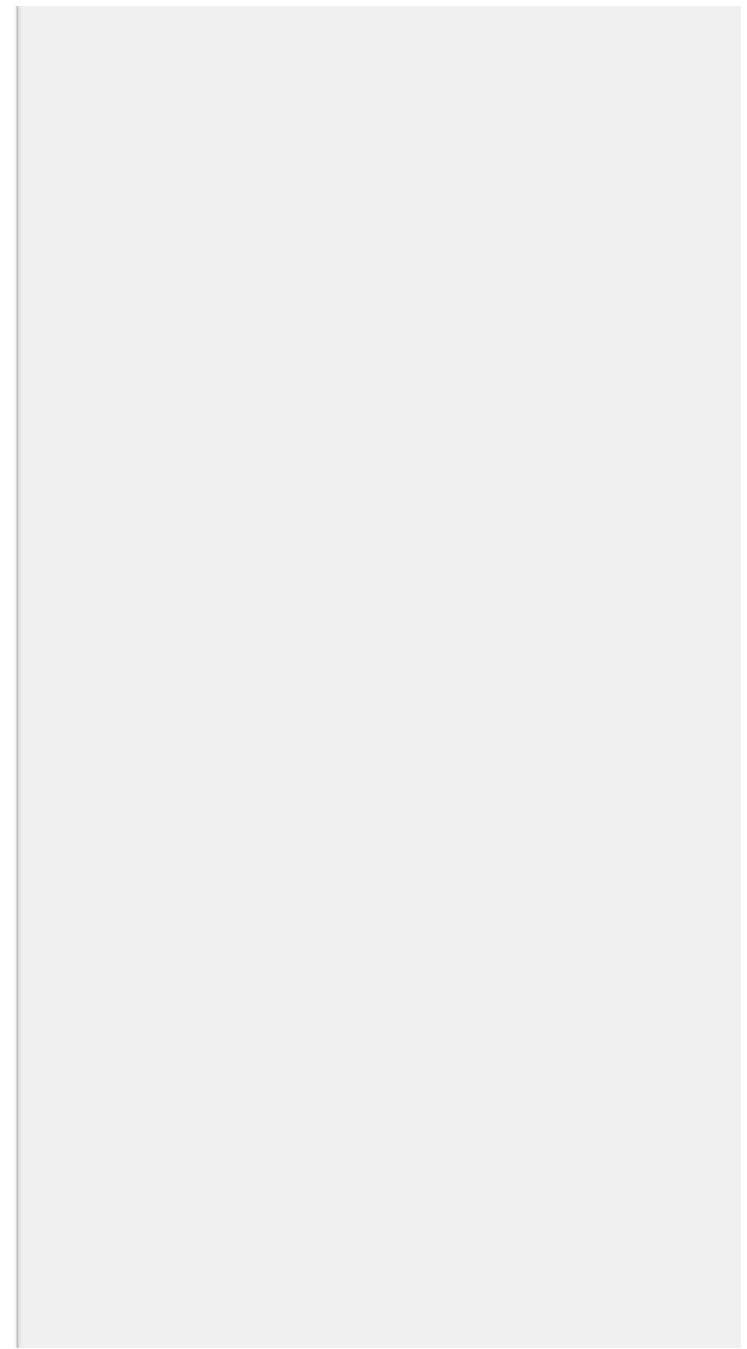
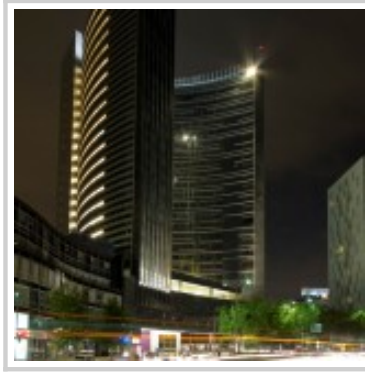
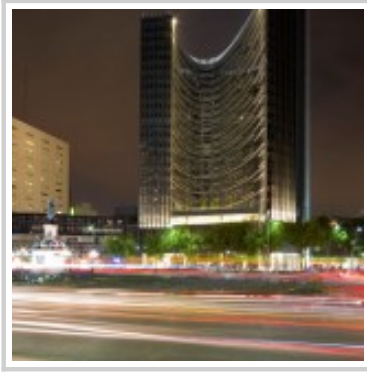
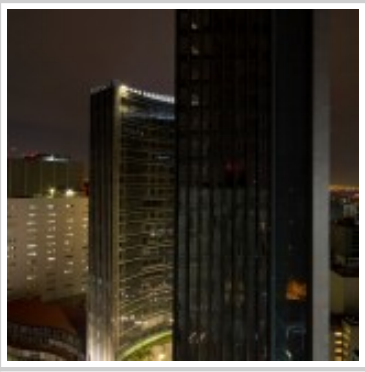
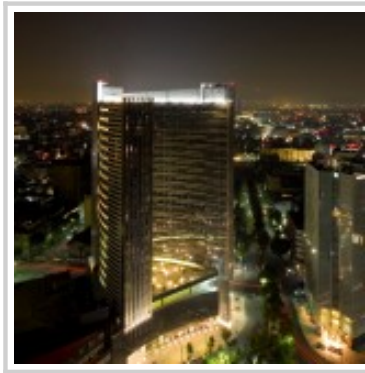
Migdal Arquitectos is an integral development company. The firm works in several typologies, all of them attended by a group of practicing specialists on diverse disciplines, such as national and international consulting companies.

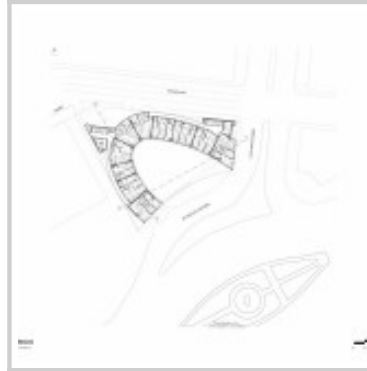
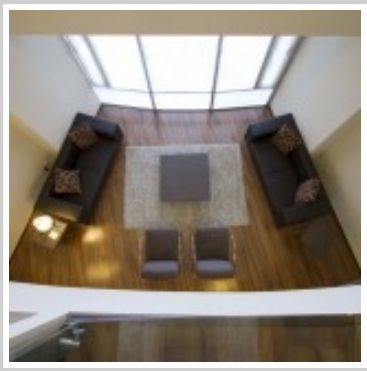
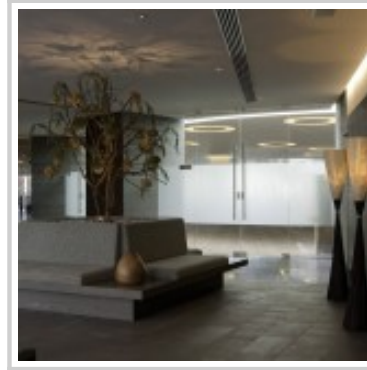
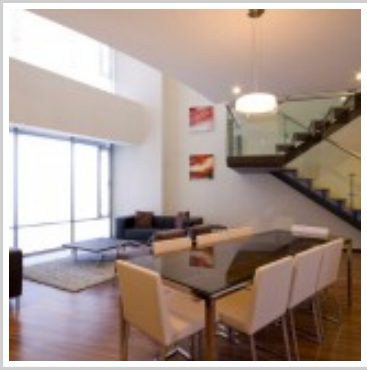
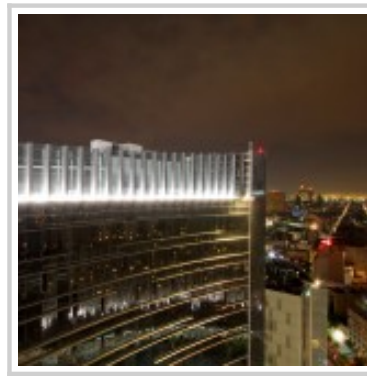
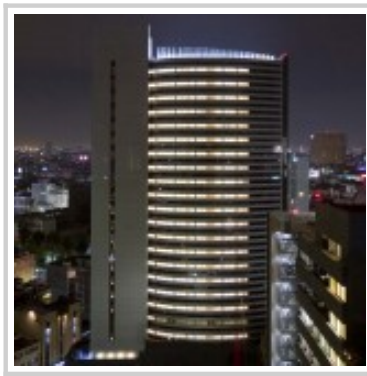
In **Migdal Arquitectos**, we project and built with the end of rich the environment and create transcendent architecture.

This construction company have made inroads in several typologies income housing developments, middle, residential, office buildings, commerce, road transport, industrial parks, education and culture facilities, such as specialized buildings. Between this big range of typologies, some constructions has become urban icons.

+ All drawings and drawings courtesy **Migdal Arquitectos** | Photo by **Luis Gordo & Ian Lizaranzu**

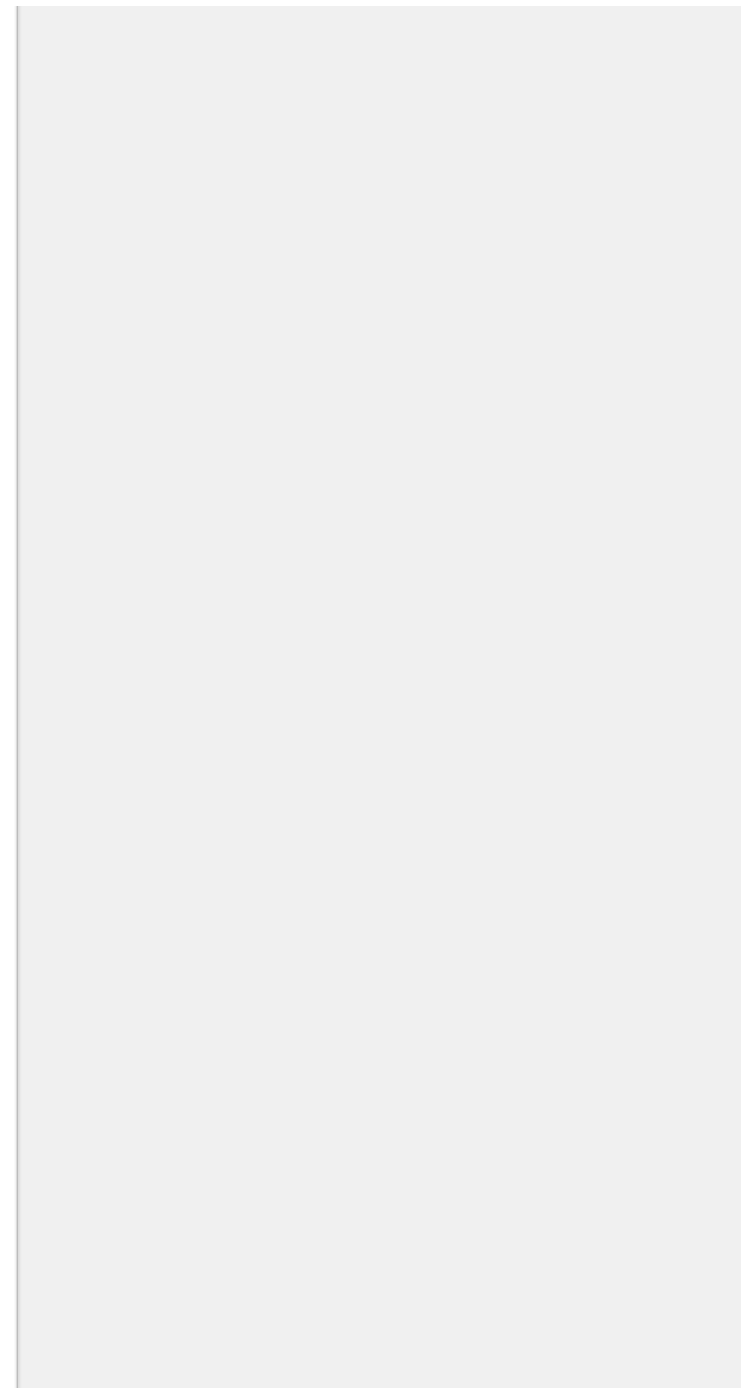






Site Plan

Typical Floor Plan 1





Typical Floor Plan 2



Amenities Floor Plan



Section

+ Recommended high-rise residential tower featured on **+MOOD**



The Sail @ Marina | NBBJ

You might like:





Silk Leaf Stadium
\ Coop
Himmelb(l)au



BIG completes
its trilogy of
housing with the
8 House in
Copenhagen



Crabill Modern \
Tonic Design



Architects
Association
Headquarters
Competition: 2nd
Prize \ lab07 +
JMV Architects

[?]

Searching for **plaza residences migdal architectos?**

1. Corporate & Event Caterer

179 3rd Avenue, New York, NY 10003

www.benjamincateringny.com

2. Relish Caterers NYC

226 East 54th Street, New York, NY 10022

www.RelishCaterers.com

3. Looking For Plaza Residences migdal architectos?

www.MonsterMarketplace.com

Find What You Need. Look For **Plaza Residences migdal architectos** Here Now

AdChoices

Subscribe

subscribe via email

submit

If you enjoyed this article, subscribe us.



Tags: [Glass](#), [Mexico](#), [Migdal Arquitectos](#), [Skyscrapers](#)

Category: [Architecture](#), [Residential](#), [Selected](#)

Comments are closed.

[« MUSH sofa + LINNE armchair + Reindeer desk | Alex Kozynets](#) | [Ten scholarships for the 2011/12 academic year at the Scuola Politecnica di Design »](#)

Find us on Facebook



plusMOOD



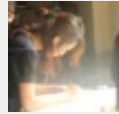
10,701 people like plusMOOD.



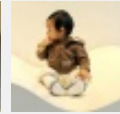
Quá



Peter



Natnicha



Phet



Lina



M

Facebook social plugin

+ EDITOR'S PICKS »



Externally United – Internally Atwain Duplex House \ L3P Architekten

L3P Architekten has completed the



Haus am Weinberg \ UNStudio

UNStudio recently has completed the Haus am Weinberg. The house is located in a setting that is at one



10 selected winning designs of A' Design Award and Competition

A' Design Award & Competition aims to highlight the excellent

+ POPULAR

+ [Umm el-Fahem Museum for Contemporary Arab Art | SO Architecture](#)

+ [BENGUELA 88 OODA](#)

+ [Externally United – Internally Atwain Duplex House L3P Architekten](#)

+ [Plan, Elevation & Section of Cascade House | Paul Raff Studio](#)

+ [Daegu Gosan Public Library Patrick O'Carrigan + Partners](#)

+ [UCSF Mission Bay Medical Center Parking Structure WRNS Studio](#)

read us on

iPad
iPhone
Android

via



[about us](#) | [banner](#) | [contact](#) | [design submission](#) | [links](#) | [Archive](#) | [advertise](#) | [store](#)



© plusMOOD 2008-2012. Some rights reserved.