

FORM

PIONEERING DESIGN

INTERNATIONAL



U.S. \$6.95 / CANADA \$8.95



A PUBLICATION OF BALCONY MEDIA, INC.

Country Club Residence

Location: Mexico City, Mexico
Designer: Migdal Arquitectos
Website: www.migdal.com.mx

This L-shaped residence was designed to maximize views, facing the exclusive greens of a golf course. The plan itself was devised in three layers, starting from the bottom: the services basement presented as a black stone “podium” that supports the entire residence; the public space, with its light and airy views of the garden; and the private, upstairs area supported by slender metal columns. The upper floor also features a 16-foot overhang that serves as a shaded terrace below.

The designer blurred the lines between interior and exterior space, ensuring that the common areas integral to daily life, flowed directly into the exterior garden. A double-height living room is enclosed in glass, and defined by a hanging wall that unfolds from the ceiling, creating a more intimate space. The fusion between the exterior and interior is further underscored through the use of complementary materials across both spaces—black stone, beige marble, aluminum and glass.

The transparency of the residence was developed with sunlight in mind. During the day, the residence is bathed in natural light with overhangs casting strategic shadows to provide shaded respite from the sun. While at night, the house is illuminated like a lamp, emphasizing the volumes that float over the grass.

Photography by Luis Gordoa and Ian Lizaranzu



CREDITS

4 House

DUBLIN, IRELAND

ARCHITECT: TAKA

DESIGN TEAM: Alice Casey, Cian Deegan

STRUCTURAL ENGINEER: Cora

MAIN CONTRACTOR: Sapele Construction, Ltd.

Country Club Residence

MEXICO CITY, MEXICO

ARCHITECT: Migdal Arquitectos

DESIGN TEAM: Jaime Varon, Abraham Metta, and Alex Metta

STRUCTURAL ENGINEER: CTC Ingenieros Civiles

INSTALLATION: Intebrax

GLASS AND ALUMINUM DESIGN: Vitrocanceles, SA de CV

LIGHTING DESIGN: Luz + Forma

Huangshan Mountain Village

HUANGSHAN, CHINA

ARCHITECT: MAD

Pix-L House

SERIFOS, GREECE

ARCHITECT: K-Studio

White Canvas on Green Roof

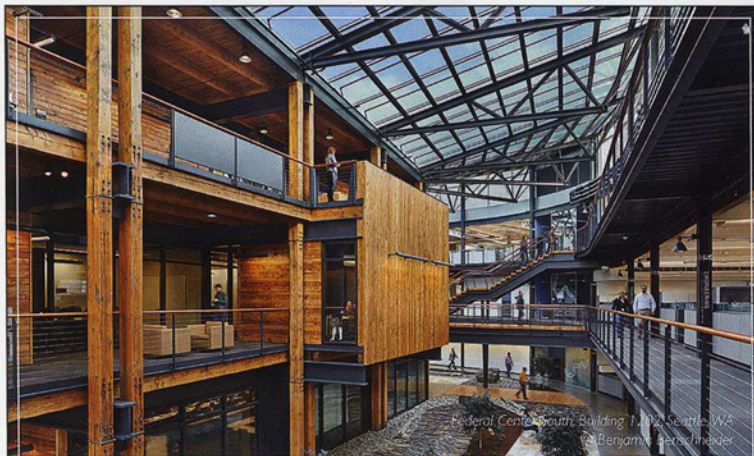
MONTREAL, CANADA

INTERIOR DESIGN: Martine Brisson

GREEN ROOF CONSTRUCTION: Les Toits Vertige

GENERAL CONTRACTOR: Rénovation Deschênes, Pied Pouce

TINSMITH: BLV Consultant



GSA Federal Center South Building | 1202, Seattle, WA
© Benjamin Woodruff/Archi



ZimmermanVisual
www.zimmermanvisual.com 213.840.2829 ken@zimmermanvisual.com

Architectural Illustration
Architectural Photography



CELEBRATING 85 YEARS OF
AWARD-WINNING DESIGN

GSA Federal Center South Building | 1202, Seattle, WA
AIA-COTE Top 10 Green Project for 2013

AIA San Francisco 2013 Design Awards:

SFJAZZ, Honor Award for Architecture

Lands End Lookout, Honor Award for Energy + Sustainability

De Anza College Media and Learning Center, Citation Award for Energy + Sustainability

The Strand, American Conservatory Theater (A.C.T.), Citation Award for Unbuilt Design

UNITED
BY OUR
DIFFERENCE


www.wspgroup.com/usa